

# SR 13 at New Rose Creek Bridge (#720029)

## Project Development & Environment (PD&E) Study

Hybrid Public Hearing | Financial Management Number 448853-1-22-01



### ENGAGE WITH US!

FDOT encourages you to participate whether you attend the hearing virtually or in-person. After reviewing the meeting materials, and/or participating, you may submit comments in the following ways:

- 1) During the virtual hearing or in-person hearing
- 2) Visiting the project website at [www.nflroads.com/NewRoseBridge](http://www.nflroads.com/NewRoseBridge)
- 3) Emailing the FDOT Project Manager Thomas Redding, at [Thomas.Redding@dot.state.fl.us](mailto:Thomas.Redding@dot.state.fl.us), or
- 4) Mailing comments to the FDOT District 2 Office at 1109 S. Marion Avenue, Lake City, Florida 32025

All comments received in-person, virtually, or electronically will be given equal consideration. While comments about the project are accepted at any time, please note that **comments must be received by August 9, 2024 to be included in the formal hearing record.**

Materials from today's public hearing are available for review on the project website. Please visit the project website at [www.nflroads.com/NewRoseBridge](http://www.nflroads.com/NewRoseBridge) or by scanning following the QR Code.



Public participation is solicited without regard to race, color, national origin, age, sex, religion, disability, or family status.

The environmental review, consultation, and other actions required by applicable federal environmental laws for this project are being, or have been, carried-out by the Florida Department of Transportation (FDOT) pursuant to 23 U.S.C. § 327 and a Memorandum of Understanding dated May 26, 2022, and executed by the Federal Highway Administration and FDOT.



Stay connected with us!



MyFDOTNEFL



@MyFDOT\_NEFL



MyFDOTNEFL

### CONTACT INFORMATION

For additional information, please contact:



Thomas Redding, PE  
Project Manager



Florida Department of Transportation, District 2  
1109 S. Marion Avenue  
Lake City, Florida 32025



Phone: (386) 961-7520



Email: [Thomas.Redding@dot.state.fl.us](mailto:Thomas.Redding@dot.state.fl.us)



Project Website: [www.nflroads.com/NewRoseBridge](http://www.nflroads.com/NewRoseBridge)

### WELCOME TO THE HYBRID PUBLIC HEARING

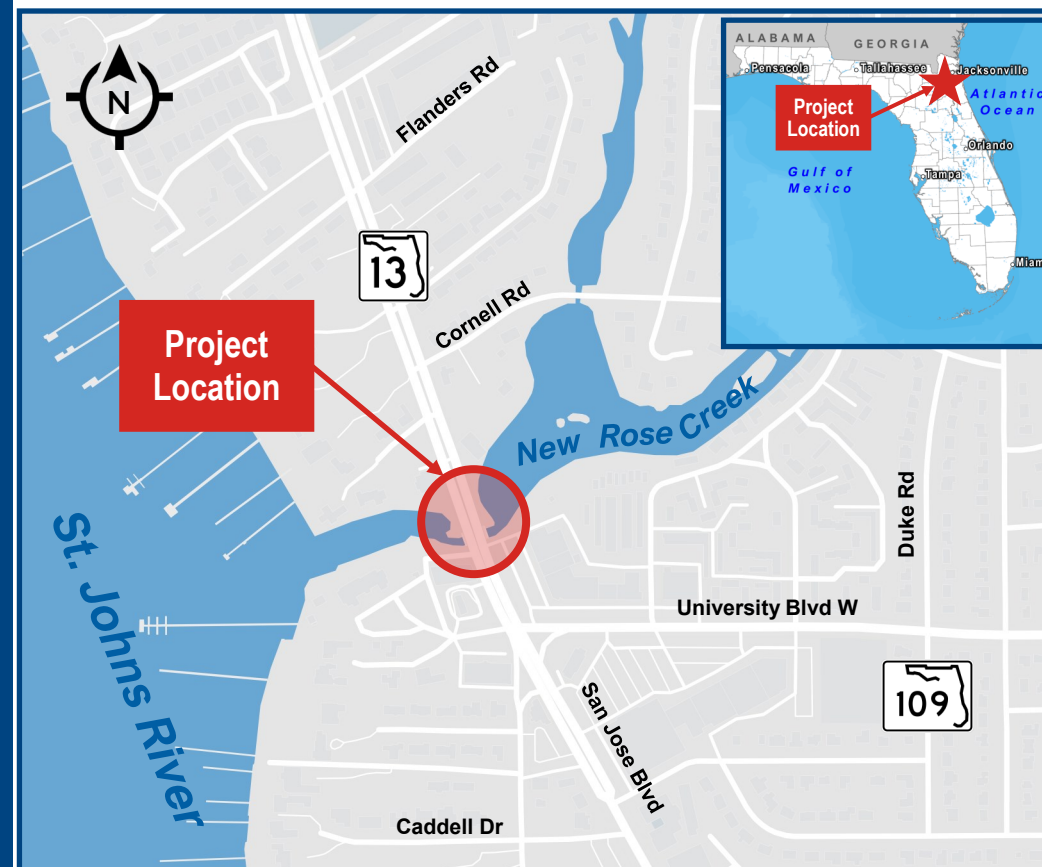
The Florida Department of Transportation (FDOT) District Two invites you to the Hybrid Public Hearing for the SR 13 at New Rose Creek Bridge (#720029) Project Development & Environment (PD&E) Study in Duval County, Florida (Financial Management Number: 448853-1-22-01). The PD&E Study is evaluating alternatives to replace the structurally deficient SR 13 bridge over New Rose Creek.

This Public Hearing is being conducted to give interested persons an opportunity to express their views concerning the location; conceptual design; and social, economic, and environmental effects of the proposed improvements.

### ABOUT THE PROJECT

The project is located on SR 13 (San Jose Boulevard) in the City of Jacksonville adjacent to the St. Johns River. The existing bridge is a single-span bridge and has been classified as "Structurally Deficient" by the FDOT Bridge Management System. As a result, FDOT is conducting a PD&E study to evaluate alternatives to replace the existing structurally deficient bridge.

Without any improvements, the bridge will continue to deteriorate, requiring weight restrictions and possibly closing the bridge to the public. Closing the bridge would require the approximately 25,000 motorists who use the bridge daily to find alternate routes, resulting in increased travel times and congestion on nearby roadways.

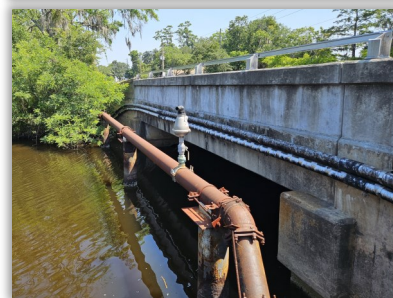
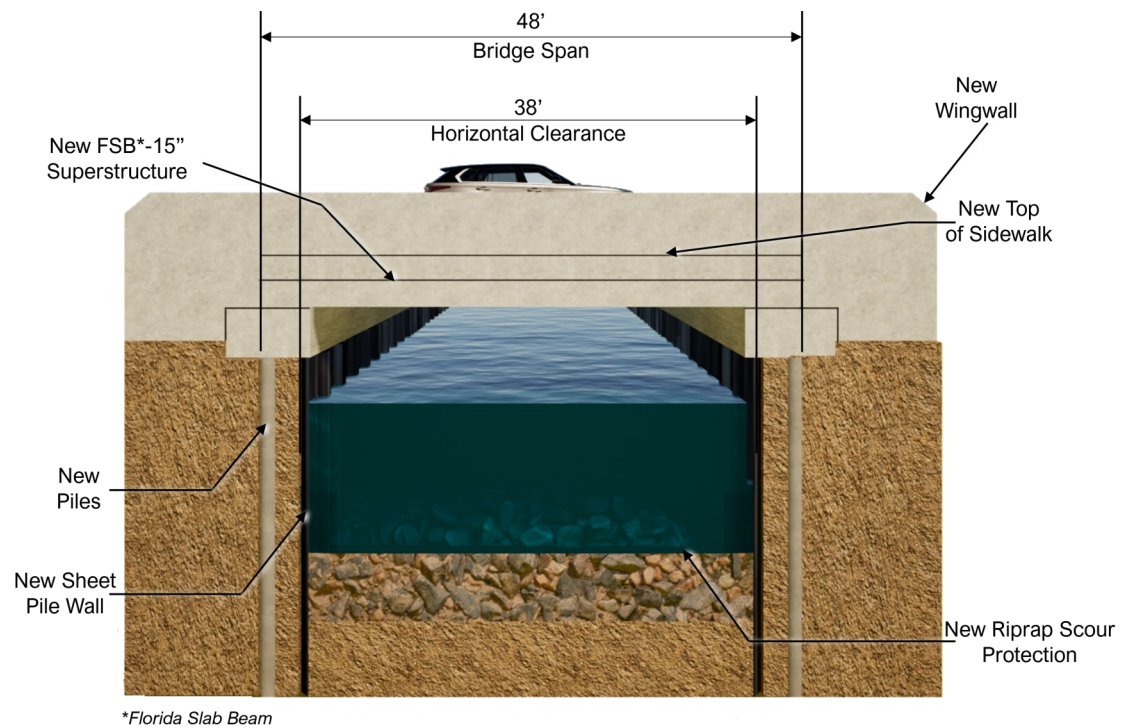


# PROPOSED IMPROVEMENTS

## PROPOSED SINGLE-SPAN BRIDGE PROFILE

The proposed Build Alternative consists of a single-span bridge measuring 48 feet in length and 94 feet in width. This alternative will increase the horizontal clearance from 28 feet 11 inches to 38 feet.

In addition to replacing the bridge, the roadway on either side of the bridge will be rebuilt. The Build Alternative is estimated to cost \$31.8 Million.

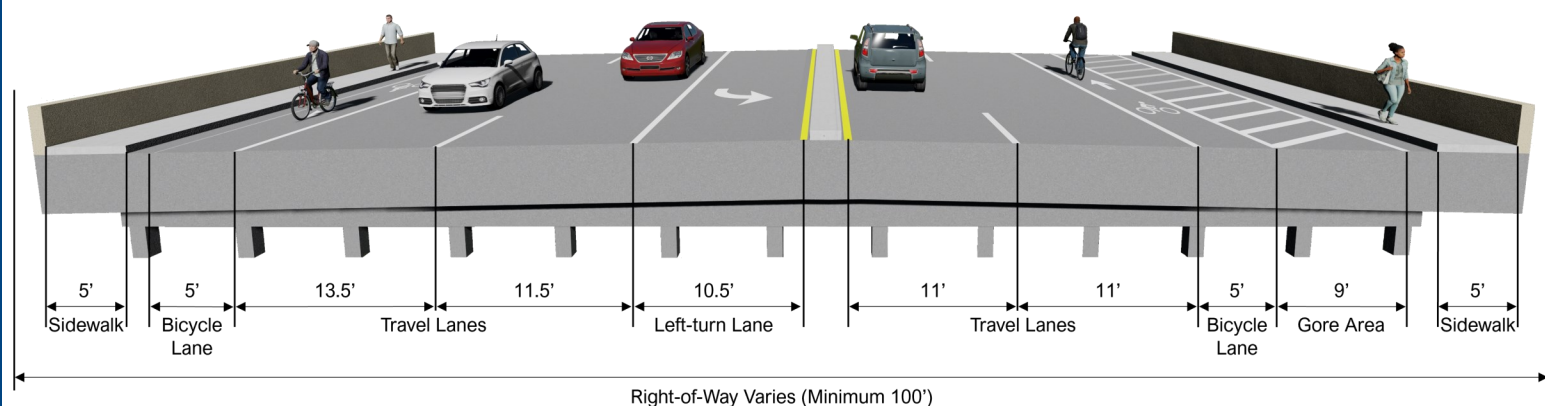


## PROPOSED BRIDGE TYPICAL SECTION

The proposed typical section will match the existing typical section, containing:

- Four 11- to 13.5-foot travel lanes
- One 10.5-foot left-turn lane in the southbound direction
- Two 5-foot bicycle lanes
- Two 5-foot sidewalks

The width of the bridge will remain at 94 feet.



# TEMPORARY TRAFFIC CONTROL PLAN

## WHAT IS A TEMPORARY TRAFFIC CONTROL PLAN?

As part of the study, FDOT developed a Temporary Traffic Control Plan (TTCP). A TTCP is a set of actions taken by a contractor to safely convey roadway users through a work zone during construction, while minimizing impacts to the flow of traffic.

The proposed TTCP for the replacement of SR 13 bridge at New Rose Creek will maintain four lanes of traffic and divert traffic around work zones by utilizing a temporary bridge. The goal is to minimize delays to the approximately 25,000 motorists who use this road daily and maintain access for pedestrians and bicyclists.



## PROJECT SCHEDULE

Phase	Year*	Cost*
Project Development & Environment	On-Going	--
Design	On-Going	--
Right-of-Way Acquisition	2025	\$4.7 Million
Construction and Construction Engineering & Inspection	2027	\$27.2 Million

\*Schedule and cost are preliminary and subject to change

## NEXT STEPS

The next step is to incorporate your input from the public hearing into our decision-making process. After the comment period closes and your input has been considered, a decision will be made and the final PD&E document will be sent to the FDOT Office of Environmental Management, which based on the Memorandum of Understanding signed with FHWA on May 26, 2022, has approval authority on this project granting location and design concept acceptance.